



Flight Plan & Site Survey

Created using **RPAS Wilco®**

Operation Name:

Victoria RC

Pilot Name:

[REDACTED]

Pilot Certificate:

[REDACTED]

Flight Start:

October 8, 2023 3:08 PM

Flight End:

October 8, 2023 5:08 PM

Flight Area (Latitude):

48° 33' 57.20" N (48.566)

Flight Area (Longitude):

123° 23' 29.04" W (-123.391)

Altitude - Radius:

Alt: 400 ft - Rad: 926.0 m (0.5 nm)

Airspace:

CONTROLLED

FIR - Contact:

CZVR - 604-586-4500

Please ensure you received all required authorizations prior to flight.

Disclaimer

This Site Survey was created using RPAS Wilco by AIM Robotics. The flight plan contained is intended only for RPAS flights on the date/time and location specified. The user accepts all responsibility for the accuracy and completeness of the information contained.

For the complete Terms & Conditions, see

<https://rpaswilco.com/#/tnc>

Included

Site Survey

Obstacles (if available)

Nearby Aerodromes

Canadian Aviation Regulations

GFA

Aerodrome Supplements

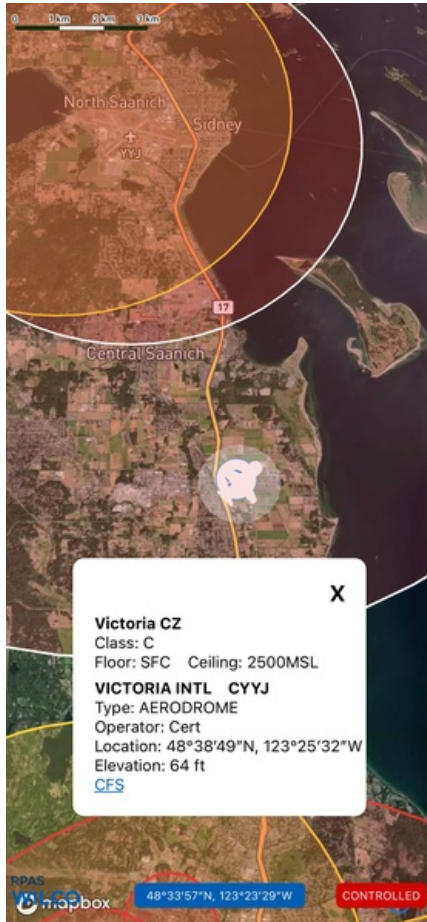
METAR & TAF (if available)

NOTAMS



CFS



Flight Map

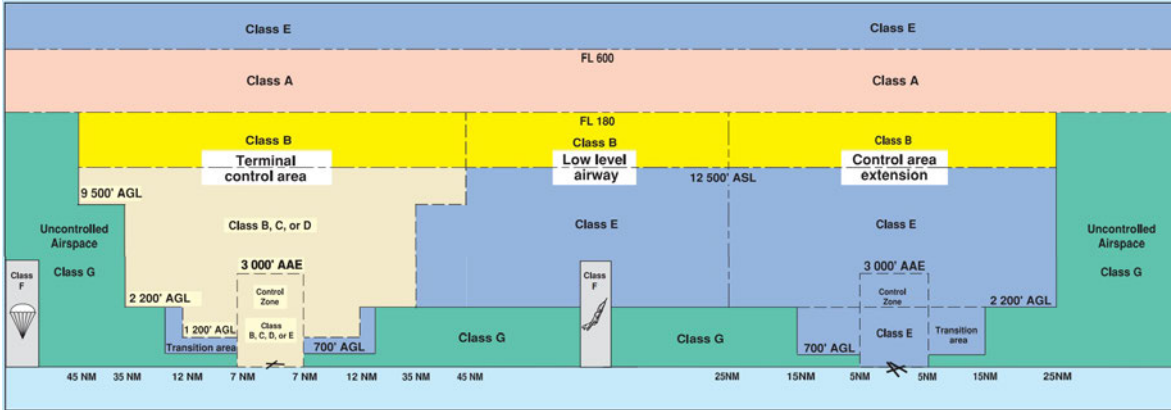


MAP Details

	Latitude	Longitude
 MODEL	48° 33' 57.20" N (48.566)	123° 23' 29.04" W (-123.391)
 Pilot	48° 34' 0.80" N (48.5669)	123° 23' 32.64" W (-123.3924)



Airspace Classification



Overlying Airspaces

Class	Name	Floor	Ceiling
B	Vancouver, BC TCA	12500MSL	18000MSL
C	Vancouver, BC TCA	9500MSL	12500MSL
C	Victoria CZ	SFC	2500MSL
C	Vancouver, BC TCA	4500MSL	6500MSL
C	Vancouver, BC TCA	2500MSL	4500MSL
C	Vancouver, BC TCA	6500MSL	8500MSL
C	Vancouver, BC TCA	8500MSL	9500MSL
B	V495 Airway	12500MSL	18000MSL
E	V495 Airway	2200AGL	12500MSL
B	T618 Airway	12500MSL	18000MSL
E	T618 Airway	2200AGL	12500MSL

Nearest Aerodromes & Distance from Operation

VICTORIA INTL (CYYJ AERODROME Cert)	Lat: 48.647	Long: 123.426	9.371 KM	5.06 NM
VICTORIA AIRPORT (CAP5 WATERDROME Reg)	Lat: 48.654	Long: 123.449	10.674 KM	5.76 NM
VICTORIA (GEN HOSPITAL) (CBW7 HELIPORT Cert)	Lat: 48.468	Long: 123.432	11.288 KM	6.1 NM

Canadian Aviation Regulations

Division III — General Operating and Flight Rules

For full listing please visit <https://laws-lois.justice.gc.ca/eng/regulations/SOR-96-433/FullText.html#s-901.27>

Visual Line-of-sight

- **901.11 (1)** Subject to subsection (2) no pilot shall operate a remotely piloted aircraft system unless the pilot or a visual observer has the aircraft in visual line-of-sight at all times during flight.
- **(2)** A pilot may operate a remotely piloted aircraft system without the pilot or a visual observer having the aircraft in visual line-of-sight if the operation is conducted in accordance with a special flight operations certificate — RPAS issued under section 903.03.

Procedures

- **901.23 (1)** No pilot shall operate a remotely piloted aircraft system unless the following procedures are established:
 - **(a)** normal operating procedures, including pre-flight, take-off, launch, approach, landing and recovery procedures; and
 - **(b)** emergency procedures, including with respect to
 - **(i)** a control station failure,
 - **(ii)** an equipment failure,
 - **(iii)** a failure of the remotely piloted aircraft,
 - **(iv)** a loss of the command and control link,
 - **(v)** a fly-away, and
 - **(vi)** flight termination.
- **(2)** If the manufacturer of the remotely piloted aircraft system provides instructions with respect to the topics referred to in paragraphs (1)(a) and (b), the procedures established under subsection (1) shall reflect those instructions.
- **(3)** No pilot shall conduct the take-off or launch of a remotely piloted aircraft unless the procedures referred to in subsection (1) are reviewed before the flight by, and are immediately available to, each crew member.
- **(4)** No pilot shall operate a remotely piloted aircraft system unless the operation is conducted in accordance with the procedures referred to in subsection (1).

Site Survey

901.27 No pilot shall operate a remotely piloted aircraft system unless, before commencing operations, they determine that the site for take-off, launch, landing or recovery is suitable for the proposed operation by conducting a site survey that takes into account the following factors:

- **(a)** the boundaries of the area of operation;
- **(b)** the type of airspace and the applicable regulatory requirements;
- **(c)** the altitudes and routes to be used on the approach to and departure from the area of operation;
- **(d)** the proximity of manned aircraft operations;
- **(e)** the proximity of aerodromes, airports and heliports;
- **(f)** the location and height of obstacles, including wires, masts, buildings, cell phone towers and wind turbines;
- **(g)** the predominant weather and environmental conditions for the area of operation; and
- **(h)** the horizontal distances from persons not involved in the operation.

Operations at or in the Vicinity of an Aerodrome, Airport or Heliport

- **901.47 (1)** No pilot shall operate a remotely piloted aircraft at or near an aerodrome that is listed in the *Canada Flight Supplement* or the *Water Aerodrome Supplement* in a manner that could interfere with an aircraft operating in the established traffic pattern.
- **(2)** Subject to section 901.73 no pilot shall operate a remotely piloted aircraft at a distance of less than
 - **(a)** three nautical miles from the centre of an airport; and
 - **(b)** one nautical mile from the centre of a heliport.
- **(3)** No pilot shall operate a remotely piloted aircraft at a distance of less than three nautical miles from the centre of an aerodrome operated under the authority of the Minister of National Defence unless the operation is conducted in accordance with a special flight operations certificate — RPAS issued under section 903.03.

Records

- **901.48 (1)** Every owner of a remotely piloted aircraft system shall keep the following records:
 - **(a)** a record containing the names of the pilots and other crew members who are involved in each flight and, in respect of the system, the time of each flight or series of flights and
 - **(b)** a record containing the particulars of any mandatory action and any other maintenance action, modification or repair performed on the system, including
 - **(i)** the names of the persons who performed them,
 - **(ii)** the dates they were undertaken,
 - **(iii)** in the case of a modification, the manufacturer, model and a description of the part or equipment installed to modify the system, and
 - **(iv)** if applicable any instructions provided to complete the work.
- **(2)** Every owner of a remotely piloted aircraft system shall ensure that the records referred to in subsection (1) are made available to the Minister on request and are retained for a period of
 - **(a)** in the case of the records referred to in paragraph (1)(a), 12 months after the day on which they are created; and
 - **(b)** in the case of the records referred to in paragraph (1)(b), 24 months after the day on which they are created.
- **(3)** Every owner of a remotely piloted aircraft system who transfers ownership of the system to another person shall, at the time of transfer, also deliver to that person all of the records referred to in paragraph (1)(b).

CRANE 482528N 1232424W (APRX 4659FT W AD (CBZ7)). 147FT AG 209FT
AMS . GTD.)

(F3060/23 NOTAMR F2503/23

Q) CZVR/QAT T/IV/NB0/E/000/999/4912N12311W999

A) CZVR B) 2309081935 C) 2311071800EST

E) IN SUPPORT OF CYVR CA FOR RE EASE PROGRAM:

IFR ACFT DEP CYCW CBQ2 CYCD CYAZ CYXX CZBB CYHC CYPK CYWH CYNJ
CAP3 CYB CYZT CYKA CY W AND CYF DESTINED FOR CYVR ARE REQUIRED
TO CTC TWR, FSS OR FIC BTN 30-90 MIN PRIOR TO DEP FOR AN APPROVED
DEP TIME.

IFR ACFT DEP CYYJ, CTC C EARANCE DE IVERY ON FREQ 126.4MHZ BTN
30-90 MIN PRIOR TO DEP FOR AN APPROVED DEP TIME.

IFR ACFT DEP CYQQ CYPW AND CAT4 DESTINED FOR CYVR ARE REQUIRED TO
CTC CYQQ TERMINA 250-339-8115 BTN 30 AND 90 MIN PRIOR TO DEP FOR
AN APPROVED DEP TIME.)

(I5159/23 NOTAMN

Q) CZVR/QFPXX/IV/B0/A/000/999/4826N12320W005

A) CXXX B) 2309071515 C) PERM

E) CBK8 VICTORIA (ROYA JUBI EE HOSPITA) (HE I)

AMEND PUB ICATIONS: OPR: ADD: NVIS OPS AUTH)

(I3840/23 NOTAMN

Q) CZVR/Q0BCE/IV/M/AE/000/002/4825N12324W005

A) CXXX B) 2307171907 C) 2310110100

D) DAI Y 1400-0100

E) CBZ7 VICTORIA HARBOUR (SHOA POINT) (HE I)

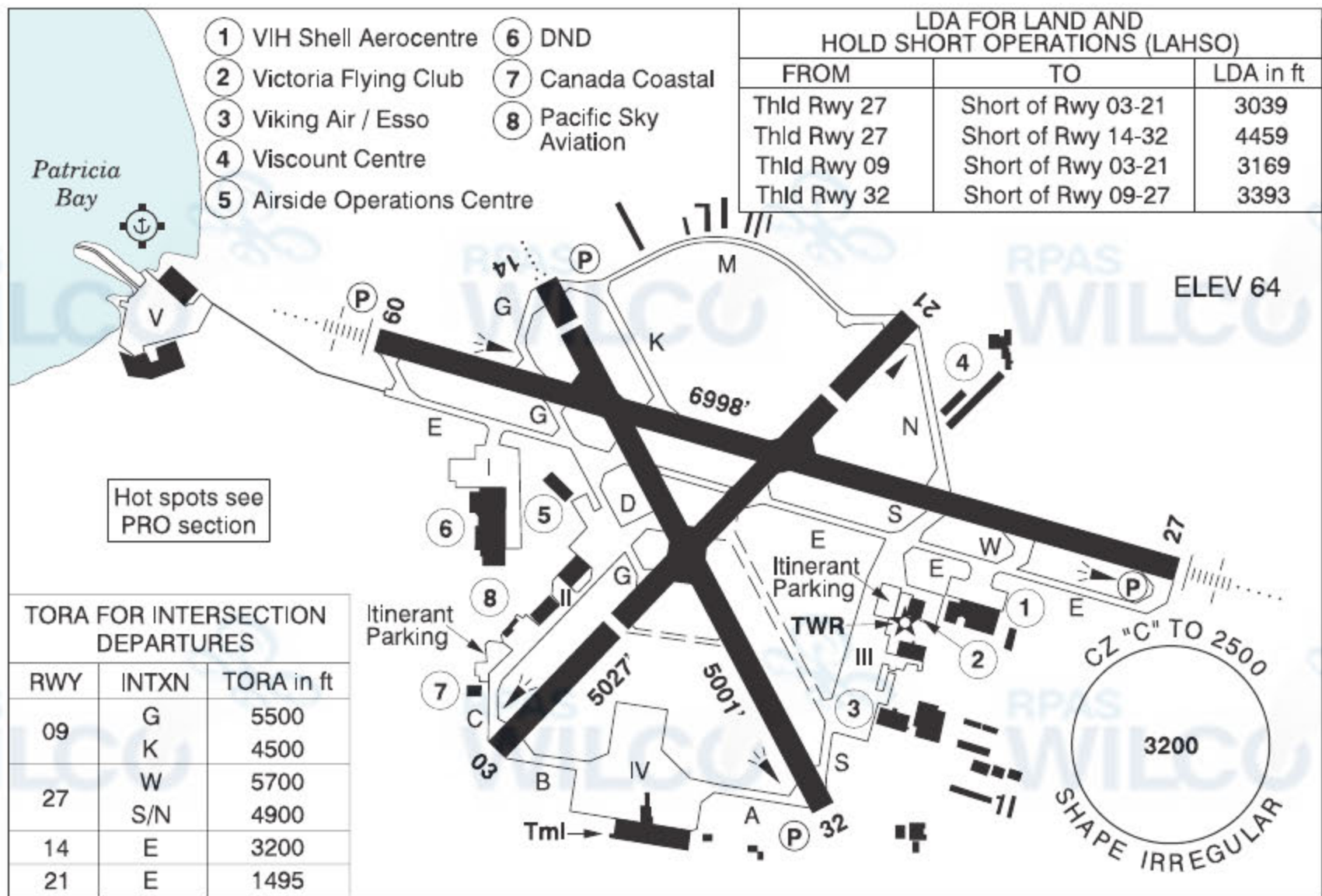
MOBI E CRANE WITHIN 70FT RADIUS CENTRED ON 482528N 1232343W (APRX
1932FT W AD (CBZ7)). 120FT AG 120FT AMS . GTD, NOT PAINTED.)

BRITISH COLUMBIA

AERODROME/FACILITY DIRECTORY

VICTORIA INTL BC

CYYJ



REF	N48 38 50 W123 25 33 12NNW 17°E (2011) UTC-8(7) Elev 64' VTA A5004 LO2 HI3 T1 CAP
OPR	Victoria Intl Aprt Authority 250-953-7536 Ext 4 H24 Cert Ldg fees
PF	A-1,2,3,6 C-4,5
CUST	AOE/120 (450 with staged off loading) 888-226-7277
FLT PLN	<div>FIC</div> Kamloops 866-WXBRIEF (Toll free within Canada) or 866-541-4101 (Toll free within Canada & USA) <div>ACC</div> Vancouver IFR 604-586-4590/4591 or 800-668-1333; IFR tng flts PPR ctc 604-586-4592 or 800-668-1333. <div>WX</div> METAR H24. AUTO (See COMM) TAF H24, issue times: 00, 06, 12, 18Z.
SERVICES	Call out chg may be levied for one or more svcs <div>FUEL</div> 100LL, JB, F-34, JA-1 (FSII avbl), HPR <div>OIL</div> All <div>S</div> 1,3 <div>ARFF</div> DESIGNATED CAT 7 1330-0800Z† <div>SUP FL</div> D & A-ICE CANWEST 250-883-6864 15-03Z†, 250-882-4271 1200-2030Z† or AC OPS 250-656-0764 <div>JASU</div> CE16 <div>MIL ADV</div> Shell 122.85 24hrs PN 443 Sqn ramp, ctc ops 250-363-5443 ext 51164. No svc avbl 443 Sqn. Call AC Gnd Handling for tran svcg 250-656-1171/0764 <div>PVT ADV</div> World Fuel/Viking Air 122.95 250-656-3231; Shell 122.85 250-655-8833 13-06Z† O/T call out chg; Victoria Flying Club 129.05 250-656-2833 <div>MIL CON</div> Shell YYJ FBO Services Ltd. 250-655-8833

BRITISH COLUMBIA

AERODROME/FACILITY DIRECTORY

VICTORIA INTL BC (Cont'd)

CYYJ

RWY DATA	Rwy 09(089°)/27(269°) 6998x200 grooved ASPH Rwy 03(027°)/21(207°) 5027x200 ASPH Thld 03 displ 1405' Thld 21 displ 886' Rwy 14(135°)/32(315°) 5001x200 grooved ASPH Thld 14 displ 427' Rwy 32 up 0.39%
RWY CERT	Rwy 09 RVR 1200(1/4sm)/Rwy 27 RVR 1200(1/4sm) AGN V Rwy 03/21 AGN IIIA Rwy 14/32 AGN IIIA
TWY CERT	Twy: C, N AGN IIIB Twy K AGN II Twy M AGN I
TWY	Twy M rstd to 12,500 lbs; Twy C rstd to 50,000 lbs.
APRON	Apron II rstd to 50,000 lbs. Apron IV restricted to scheduled commercial tfc only. Exceptions require prior approval of aprt operator.
RCR	Twr 250-655-2866 1330-0730Z± Apr 1-Oct 31, 1230-0730Z± Nov 1-Mar 31 CRFI, Rwy 03/21 restricted to max 65,000 lbs for tkof and ldg. No weight restriction for taxiing acft Rwy 03/21 S of Rwy 14/32. PLR/PCN
LIGHTING	03-(TE ME), 21-(TE ME), 09-AN(TE HI) P2, 27-AN(TE HI) P2, 14-AO(TE ME) P2 3.37°, 32-(TE ME) P2 3.37° PAPI limitation/restriction. PAPI Rwy 14 to be used only within 2NM of thld, PAPI Rwy 14 & PAPI Rwy 32 on all rwy lgt settings. ARCAL-119.7 type K 08-14Z± Dur hrs of twr closure, one ILS will remain on.
COMM	RCO Kamloops rdo 119.7 (RAAS) 08-14Z± Pacific rdo 122.375 (FISE) 126.7 (bcst) ATIS 118.8 1-877-517-2847 14-08Z± CLNC DEL 126.4 14-08Z± GND 121.9 361.4 14-08Z± O/T IFR clnc prior to tkof ctc Kamloops rdo 119.7 TWR 119.7 inner 119.1 outer 239.6 (E) 14-08Z± (emerg only 250-655-2866) MF Kamloops rdo 119.7 08-14Z± 7NM 2500 ASL (CAR 602.98) TML 127.8 ARR 125.45 DEP 125.95 MIL 443 Sqn-call Stinger ops 349.3 AUTO 118.8 08-14Z±
NAV	NDB ACTIVE PASS AP 378 (L) N48 52 26 W123 17 24 MILL BAY MB 293 (L) N48 40 15 W123 32 13 VOR/DME YYJ 113.7 Ch 84 N48 43 37 W123 29 04 (1997') DME IKH 108.7 Ch 24 N48 39 10 W123 26 08 (80') ILS IKH 108.7 (Rwy 09) RVR LOC reliable only within 10° either side of centreline; IYJ 109.95 (Rwy 27) RVR LOC reliable only within 10° either side of centreline.

BRITISH COLUMBIA

AERODROME/FACILITY DIRECTORY

VICTORIA INTL BC (Cont'd)

CYYJ

PRO

Pilots should refer to Canadian Airport Charts (CAC) to obtain details on established hot spots, prior to operating on maneuvering areas. CAC are available for free on the NAV CANADA website.

VFR DEP/ARR ROUTES

DEPARTURES:

Beaver Point, Brentwood, Cordova, Cowichan, D'arcy Island, Moresby Island, Shawnigan Lake, Stuart Island

ALL ROUTES - Obtain Transponder code (see below);
Ctc Clearance Delivery (126.4);
Fly direct to assigned departure point;
Ctc Outer Twr (119.1) leaving 1000'.
Maintain 1500' until cleared higher by Outer Twr;

ARRIVALS:

Beaver Point, Brentwood, Cordova, Cowichan, D'arcy Island, Shawnigan Lake, Stuart Island

ALL ROUTES - Obtain Transponder code (see below);
Ctc Outer Twr 119.1;
Fly assigned route;
Maintain 2000' until cleared lower by Inner Twr (or turning final);
Ctc Inner Twr (119.7) at arrival point for landing instructions.

ARR NOTES:

High performance VFR turboprop and jet t/c (in Victoria tml airspace) ldg CYYJ can expect radar vectors to 8NM final at or above 3000'; Beaver Point arrival restricted to 160kt or less in Victoria Twr airspace (2500' or blw).

OBTAINING A TRANSPONDER CODE:

All VFR aircraft arriving/departing/overflying Victoria Class C or D airspace require a transponder code, obtained by:

- Filing a VFR flight plan;
- Contacting Kamloops FIC at 866-541-4101;
- Contacting Pacific rdo on 122.375; or
- Contacting one of the following ATS units enroute: CYHC, CYCD, CYWH, CZBB, CYXX, CYNJ or CYPK.

PPR for non-transponder ops within Victoria Class C or D airspace, ctc 250-655-2869.

TAXI ROUTES FOR WIDEBODY ACFT:

Rwy 09 Dep: Twy B, Rwy 03/21, Twy G, Twy E.
Rwy 09 Arr: Twy E westbound, Twy S, Twy A.
Rwy 27 Dep: Twy A, Twy S, Twy E eastbound.
Rwy 27 Arr: Twy E, Twy G, Rwy 03/21, Twy B.

BRITISH COLUMBIA

AERODROME/FACILITY DIRECTORY

VICTORIA INTL BC (Cont'd)

CYYJ

PRO (Cont'd)

DE-ICING

GENERAL:

- 1. De-icing at gates is not permitted without authorization from airport operator.
- 2. North de-icing pad access is controlled by DE-ICE CONTROL. ALL Aircraft must have an approved assignment time prior to pushback or taxi.
- 3. Assignment times will be provided to de-icing providers only and are provided at 20-minute intervals. De-icing provider contact information and times are detailed in the Services section.
- 4. ATC does not have oversight of de-icing assignments; all inquiries must be directed to de-icing providers or Snow Desk when open (250-953-7595). If the Snow Desk is not open, all inquiries should be directed to de-icing providers or Airport Operations, Manager, Integrated Operations Centre.

SCHEDULED COMMERCIAL AIRCRAFT:

- 1. De-icing assignments will be communicated to commercial aircraft via de-icing providers and individual company processes.
- 2. **NO de-icing will occur until an assignment has been issued.**

NON-SCHEDULED AIRCRAFT:

- 1. Aircraft requiring an assignment shall contact a de-icing provider, who will request the assignment.
- 2. De-ice control will issue the assignment between scheduled commercial movements and notify the de-icing provider. The de-icing provider will provide the assignment to the aircraft.
- 3. If the non-scheduled aircraft misses their assignment, a new assignment must be obtained.
- 4. **NO de-icing will occur until an assignment has been issued.**

NOISE

NOISE OPERATING RESTRICTIONS:

All night circuit and VFR dep climb rwy hdg to 1100' prior to turning crosswind or to dep pt, unless otherwise directed by ATC.

Consistent with limiting factors, all acft shall use Rwy 09/27 fr 04-15Z†.

Limiting Factors:

- Physical cond of sfc (dry, wet, icy);
- Max effective crosswind component of 15kt;
- Max effective tailwind component of 5kt;
- Visual restrictions due to position of the sun.

Local turbo-jet tng not permitted fr 06-15Z†.

GENERAL:

Night ops Rwy 03/21 not auth, except tkof Rwy 03.

Rgt hand circuits Rwy 09, 21 & 32 (CAR 602.96)

AIRSPACE:

CAR Part VII opr must ensure routes flown at night meet minimum alt requirements for commercial ops.

MIL

Apron 1 DND - PPR req via 443 MH Sqn Ops: (250) 363-5443 ext. 51081. Transient aircraft to park on SW portion of apron. NW section of apron has max loading of 51/R/A. No taxiing permitted E of hangar.

CAUTION

Hwy crosses apch to Rwy 14. Aprx 750' fr thld mobile obst to 30' above thld elev. Only pilots familiar with local terrain should use this apch dur hrs of darkness. Hi terrain reduces operational length of Rwy 14 PAPI. Resident Canada Goose population significant hazard at or blw 400 AGL west of thld Rwy 09 out to 1.5 NM. Migratory birds in vic of aprt Oct-Apr.

CANADA WATER AERODROME SUPPLEMENT

Effective 0901Z 20 April 2023 to 0901Z 21 March 2024

B268 AERODROME/FACILITY DIRECTORY

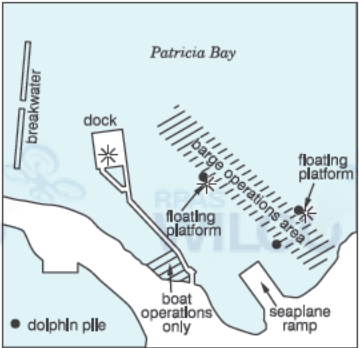
VICTORIA AIRPORT BC

CAP5



REF	N48 39 13 W123 26 57 12NNW 17°E (2013) UTC-8(7) Elev00' VTA A5004 LO2 T1
OPR	Victoria Intl Aprt Authority 250-953-7500/7511 Reg
PF	A-1,2,3,6 at adj land A/D C-4,5
CUST	AOE/15 888-226-7277 Daylight hrs only
FLT PLN	
FIC	Kamloops 866-WXBRIEF (Toll free within Canada) or 866-541-4101 (Toll free within Canada & USA)
WX	METAR H24 (CYYJ) AUTO (See COMM) TAF H24, issue times: 00, 06, 12, 18Z

SERVICES	
FUEL	100LL 866-654-0646 PN
OIL	20W50
S	1,3 at adj land A/D, 5



CANADA WATER AERODROME SUPPLEMENT

Effective 0901Z 20 April 2023 to 0901Z 21 March 2024

AERODROME/FACILITY DIRECTORY B269

VICTORIA AIRPORT BC (Cont'd)

CAP5

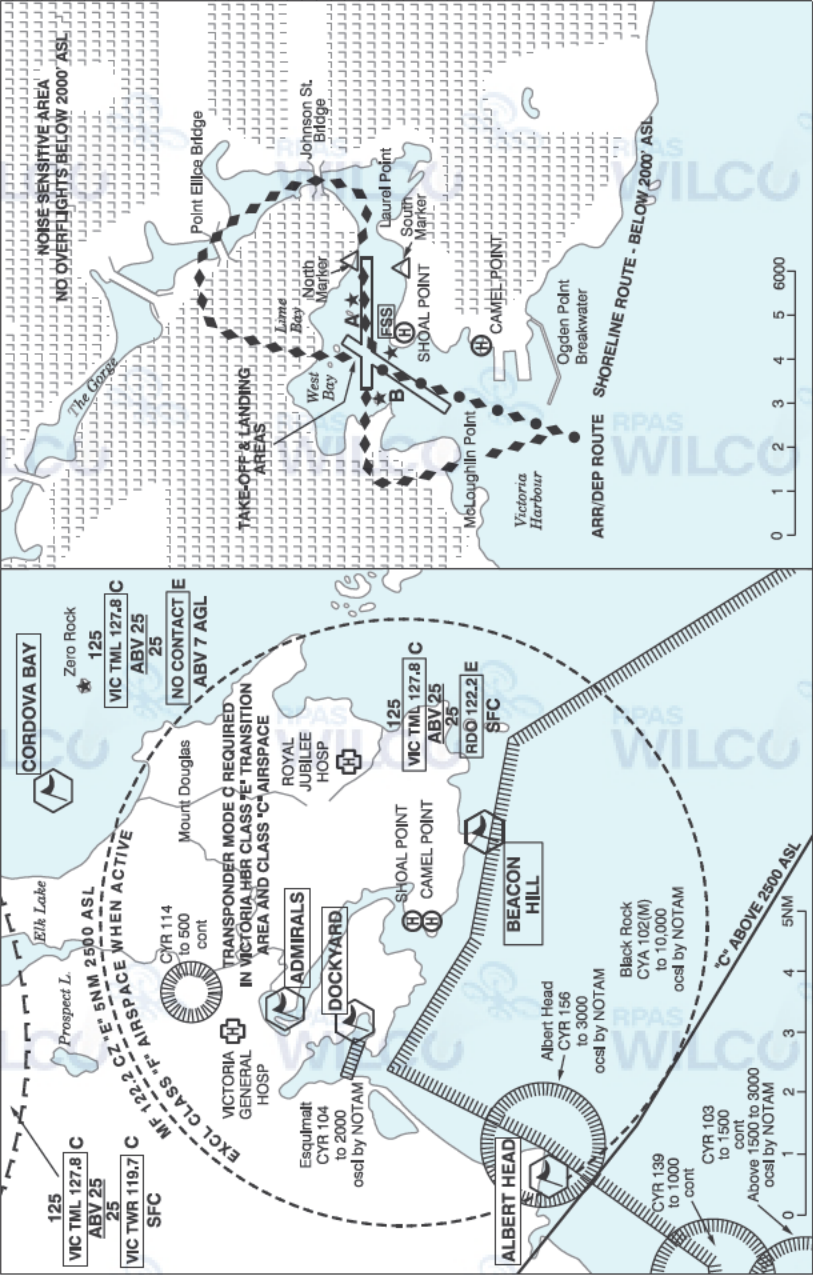
A/D DATA	Tidal range 10', current 1-2 kt. Military buoys in bay. Ramp.
COMM	
RCO	Kamloops rdo 119.7 (RAAS) 08-14Z± Pacific rdo 122 375 (FISE) 126.7 (bcst)
ATIS	118.8 1-877-517-2847 14-08Z±
CLNC DEL	126.4 14-08Z±
GND	121.9 361.4 14-08Z±
TWR	119.7 inner 119.1 outer 239.6 (E) 14-08Z± (emerg only 250-655-2866)
MF	Kamloops rdo 119.7 08-14Z± 7NM centred on adj land A/D 2500 ASL (CAR 602.98)
AUTO	118.8 08-14Z±
NAV	
NDB	YJ 200 (M) N48 38 39 W123 23 58
VOR/DME	YYJ 113.7 Ch 84 N48 43 37 W123 29 04 (1968')
PRO	Land A/D Adj E; alighting area within class "C" CZ. Water cond permitting, avoid ops closer than 0.5NM from shoreline due Noise Sensitive Area.
CAUTION	Rough water in W winds.

CANADA WATER AERODROME SUPPLEMENT

Effective 0901Z 20 April 2023 to 0901Z 21 March 2024

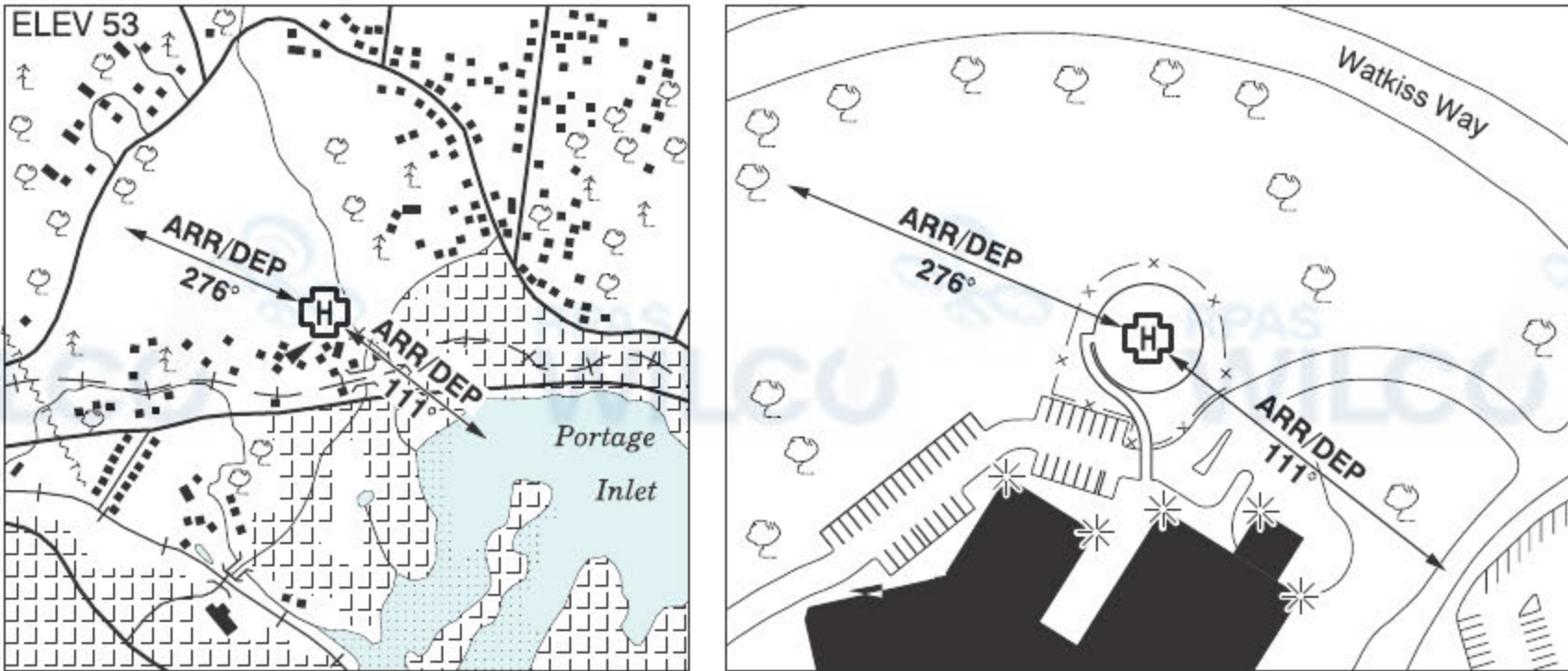
B270 AERODROME/FACILITY DIRECTORY

VICTORIA HARBOUR VFR TERMINAL PROCEDURES CHART



VICTORIA (GEN HOSP) BC (Heli)

CBW7



REF	N48 28 05 W123 25 56 17°E (2012) UTC-8(7) Elev 53' VTA A5004
OPR	Vancouver Island Health Authority 250-370-8555 Cert NVIS OPS AUTH PPR
PF	A-1,2,4 C-3,5,6
FLT PLN	
FIC	Kamloops 866-WXBRIEF (Toll free within Canada) or 866-541-4101 (Toll free within Canada & USA)
HELI DATA	FATO/TLOF 86' dia CONC Safety Area 115' dia Max heli overall length 57.4' (CAR 602.96)
RCR	Opr
LIGHTING	RW(ME) PN
COMM	
RADIO	Harbour rdo 122.2 (V) 1345-0530Z±
RCO	Pacific rdo 125.85 (FISE) 126.7 (bcst)
ATIS	Victoria Harbour 120.0 14-05Z±
MF/ATF	Harbour rdo 1345-0530Z± O/T Harbour tfc 122.2 5NM 2500 ASL within Victoria Harbour CZ (CAR 602.98)
PRO	Arr/dep 111° fr heli, slope 12% (H2), day/night use (CAR 602.96). Arr/dep 276° fr heli, slope 16% (H2), NVIS rqrd for night use (CAR 602.96).